



# EARLY ORDER PROGRAM



2024/2025

# EARLY ORDER ADVANTAGES

**At Amjay Ropes and Twines we want to reduce the time it takes to fulfill your needs!**

Bearing in mind some of the most demanding issues we have faced such as pandemics, equipment and container shortages, strikes, weather related issues, among other, Amjay has developed the Early Order Program guaranteeing you receive your order in full and in time.

By sending us an Early Order, we can guarantee you:



### Full Product Delivery

You will have no concerns with limited availability, we ensure your order is fulfilled and available regardless of seasonal demand



### On Time Delivery

You will have what you need when you need it by allowing Amjay Ropes and Twines to schedule and organize shipments in advance.



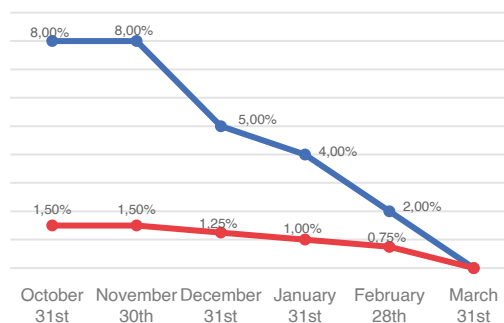
### Cost

You will have access to our highest levels of discount, which will also allow you to start planning financially the for the coming year.

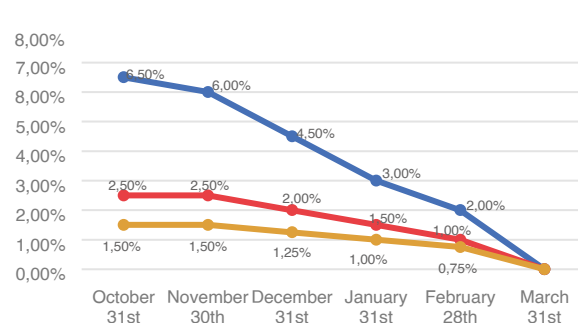
**Take advantage of the winter months before the season officially kicks off! With us, you will always be a step ahead of your competitors!**

**See page 15 and 16**

% EARLY PAYMENT Discounts



% EARLY ORDER & EARLY TAKE Discounts



— PP Twine and Net Wrap — Silage — Sisal Twine

# TRANSPORT LOGISTICS

## CONTAINER LOAD

Selection is not available for full direct container deliveries

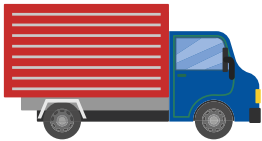


- Pumpjack
- Driver Assistance
- Lift Gate

If you want your delivery to contain these or other extras, please check with your sales representative.

## TRUCKLOAD

This selection is possible if you need any of the extra services below:



- Pumpjack \*
- Driver Assistance \*
- Lift Gate \*
- Different Truck Configurations \*\*

\*Paid Services, see price list and please check with your sales representative.

\*\*For different truck configurations, please obtain a delivery quote from your sales representative

**NOTE:** For net wrap, plastic twine, sisal twine and stretch film, freight is included on minimum orders of 4 pallets or more of mixed product. For all other products please contact your sales representative in order to get a freight quote.





# UNI-TECH

## TWINE TECHNOLOGY

The **UNI-TECH** technology is the **BEST development EVER MADE** in the production of high performance range baler twines and brings you the self sufficiency you need in the field.

An entirely new technology, equipment, production system and know how that allows us to produce longer, **stronger twines** giving you **much more benefits**.

ALREADY  
IN THE FIELD  
MORE THAN

**114  
MILLION  
BALES**

# BEST TWINE

IN THE MARKET FOR YOUR **PROFESSIONAL BALING!**

### Features of UNI-TECH twines

- **U**nique **KNOT** - Tight, steady and never slippery;
- **U**nique **STRENGTH**- The most powerful knot strength in the World;
- **U**nique **COMPACT BALES** - **UNI-Tech twines** allow you to obtain the highest density and weight in bales, with a **FIXED** and **COMPACT** size. The bales **WILL NOT EXPAND**, maximizing the payload of containers and reducing the transport cost per ton.



# +Autonomy +Performance



### UNI-TECH TECHNOLOGY

Look for this symbol on all spools produced with UNI-TECH Technology



# HD TWINES

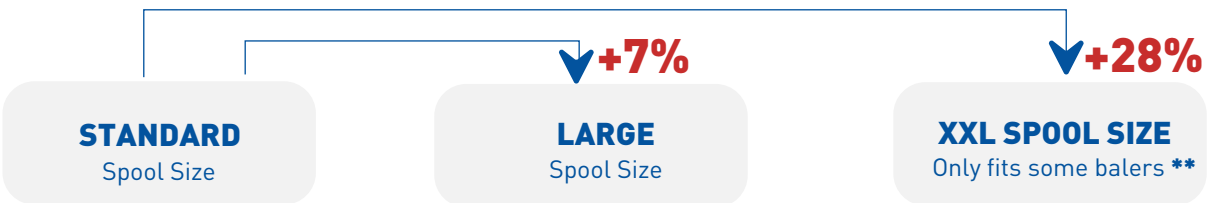
## FOR HIGH DENSITY BALES



# Advantages 650

- High bale density
- Improved resistance
- Reduced wear on baler parts
- Perfect knots and knot alignment
- Excellent Performance

**+ % LENGTH & AUTONOMY**



	<b>GH 3600-650 UNI-TECH</b>	<b>GH 3850-650 UNI-TECH</b>	<b>GH 4600-650 UNI-TECH **</b>
Height	12,99 in	12,99 in	12,99 in
Diameter	11,42 in	11,61 in	12,20 in
Weight	22 lb	24,14 lb	28,5 lb
Bales per pallet	48	36	36

\*Available upon request. \*\*XXL Spool sizes will fit balers on the list that can be found at the end of this program.

# GOLDSOFT HD TWINES

## FOR HIGH DENSITY BALES

# Advantages 550

- Low friction characteristics
- Reduced wear on baler parts

**+ % LENGTH & AUTONOMY**



4000-550\*

23 lb\*



5000-550\*

28,5 lb\*

**▼ +25%**

**STANDARD**

Spool Size

**XXL SPOOL SIZE**

Only fits some balers\*\*



Using Goldsoft



Using other baler twine  
from competition

	<b>GOLDSOFT 4000-550</b>	<b>GOLDSOFT 5000-550**</b>
Height	12,99 in	14,57 in
Diameter	11,42 in	12,20in
Weight	22 lb	28,5 lb
Bales per pallet	36	36

\*Available upon request.

\*\*XXL Spool sizes will fit balers on the list that can be found at the end of this program.



# HD TWINES

## FOR HIGH DENSITY BALES



# Advantages

- More autonomy
- More length per spool
- Less downtime in the field due to changing spools

## 550



5500-550



**XXL SPOOL SIZE\***  
Only fits some balers

## 30,85 lb

## 650



5000-650



Ideal for **demanding** baling conditions\*\*

Ideal for **very demanding** baling conditions\*\*

**Developed specifically for New Holland Big Baler 1290 High Density and Case IH Large Baler 436 High Density**

\*Available upon request.

\*\* Baling conditions are mainly influenced by weather conditions, density of crop and bale size. Contact your Sales Rep. for advice

	<b>NHD GOLDSOFT 5500-550</b>	<b>NHD ONE 5000-650</b>
Height	14,57 in	14,57 in
Diameter	12,80 in	12,80 in
Weight	30,85 lb	30,85 lb
Bales per pallet	36	36

FOR AGRICULTURAL USE ONLY  
UNRECOMMENDED FOR UTILIZATION OUTSIDE

# GRAND HARVEST

# TWINES

## FOR BIG SQUARE BALES

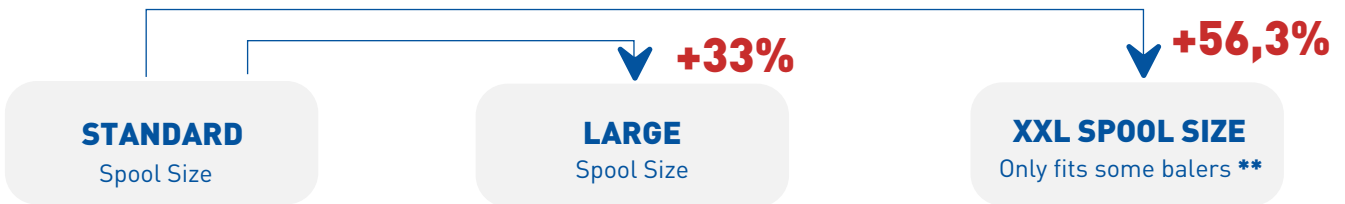


The Grand Harvest Premium Range of Heavy Twines is the ideal choice for big balers.

**Reliable and with a quality developed throughout years of practical expertise and field testing.**



**+ % LENGTH & AUTONOMY**



**Grand Harvest is the reference in the market for High Density Twines. NOW AND ALWAYS!!**

	GH 4000-350	GH 4000-440 UNI-TECH	GH 5300-440 UNI-TECH	GH 6250-440 UNI-TECH**	GH 4000-500
Height	12,99 in	12,99 in	13,11 in	14,57 in	12,99 in
Diameter	9,84 in	10,43 in	11,61 in	12,20 in	11,02 in
Weight	15,7 lb	18,2 lb	24,15 lb	28,15lb	20 lb
Bales per pallet	48	48	36	36	48

\*Available upon request. \*\*XXL Spool sizes will fit balers on the list that can be found at the end of this program.



FOR AGRICULTURAL USE ONLY  
ÉQUIPEMENT POUR UTILISATION AGRICOLE

# GRAND HARVEST

# TWINES

The softest twines for Small Square Bales making it ideal for hay baling.

## FOR SMALL SQUARE BALES



9000-130

15,5 lb



9600-170

20,7 lb



7200-170

16,30 lb



9000-180

20 lb



12000-185

24,5 lb



12000-185

30 lb

## FOR BIG ROUND BALES

Always reliable with a top performance!

\*Available upon request.



20000-110

13 lb\*



28000-110

18,2 lb



40000-110

26 lb



20000-110

13 lb



# SISAL AND BINDER TWINES

**Sisal baler twine**, as a natural fiber, can play a very important role in **environmental protection** acting as a substitute for other synthetic products. The fiber naturally biodegrades into the soil and as such does not require removal from the field by the farmer.



## Advantages

- Biodegradable
- Uniform twine thickness
- Guaranteed minimum tensile strength
- Treated to resist rotting, mold, insects and rodents





# SILAGE FILM

The process of fermentation only runs properly under rejection of air. And we have the best product for you!

**Less air, better silage!**



## Advantages

- Great puncture resistance
- Bale size improvement and shape consistency
- High performance silage film that delivers high feed value efficiently and profitably
- Trouble free wrapping
- 12 month UV guarantee
- Available colors: White. **On request:** Green
- Available width: 20' and 30'
- Available number of layers: mono layer and/or five layers.
- Available Film Thickness: 1.0 mil. **On request:** in 1.2 mil or 1.5 mil



# BALPAQ STRETCH FILM



## Advantages

**7**  
layers

- The Blown Film technology allows for a much better performance in both longitudinal and transverse direction, very important when baling square bales with very aggressive corners in extreme conditions;
- The 7 layer - film provides an improved and even higher puncture resistance, than mono or 5 layers;
- High Stretch capability;
- Minimum losses of Carbon Dioxide (CO2) and Oxygen penetration;
- UV Stabilized for 1 year;
- Maximum Adhesive Additives to guarantee air and water resistance between layers, so that silage fermentation can be excellent;

**NEW**

**Balpaq sets a new standard for high quality agriculture stretch film\*.**



\*Available only under order confirmation.

# COTESI® CROSS-NET WRAP

## THE PERFECT MATCH FOR YOUR ROUND BALER



### Advantages

- Cotesi patented cross weft technology;
- If a warp or weft are severed, the net wrap will still hold the bale;
- Withstands more pressure;
- Extra crop protection

Since 2020,  
**21 MILLION**  
bales in  
the field!

**CROSS NET**  
The **BEST**  
net wrap in  
the world!



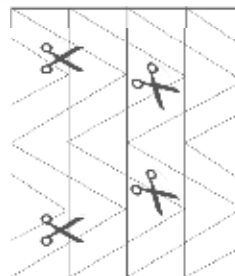
**Applications:**

- Hay
- Straw
- Corn Stalks

**Available in:**

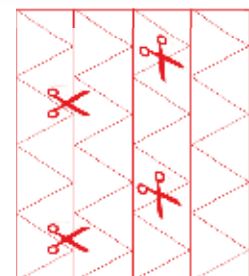
- 48'' x 9 840'
- 51'' x 9 840'
- 64'' x 7 000'
- 67'' x 7 000'

**Cross-Net**  
Construction



Does not open the net.

**Standard**  
Construction



Opens the net.



FOR AGRICULTURAL USE ONLY  
UNDESIGNED FOR UTILIZATION AS RIGGERS

# GRAND HARVEST

# GRAND HARVEST NET WRAP

## THE MOST RELIABLE SOLUTION FOR YOUR ROUND BALER

Grand Harvest net wrap has a reliable quality that performs on every round baler and baling conditions.  
The best balance between price and quality.

**Applications:**

- Silage
- Hay
- Straw

**Available in:**

- 48'' x 9 840'
- 51'' x 9 840'
- 64'' x 7 000'
- 67'' x 7 000'



# NYTRO

# NYTRO NET WRAP

## LONGER SIZE NET WRAP

Which means: **Less downtime in the field** > More bales per day with **less stops to refill.**

**+ % LENGTH & AUTONOMY**



**Applications:**

- Silage
- Hay
- Straw

**Available in:**

- 48'' x 12 500'
- 51'' x 12 500'
- 64'' x 9 000'
- 67'' x 9 000'

**GH 9 840'**

**+27%**

**NYTRO 12 500'**

**GH 7 000'**

**+29%**

**NYTRO 9 000'**

# OTHER CROP PROTECTION PRODUCTS



## > SHEETING

- On this white/black film, the white surface reflects light energy, and the black layer provides 100 opacity;
- The free fall folded one piece cover does not require sealing or taping, saving time and increasing your productivity;
- Strength at the folds results in reduced punctures, tears, and performance issues;

### Technical upon request Information:

- Available in 5 mil, 6 mil and 8 mil thickness;
- **Upon request**
- Black and white;
- Guaranteed UV Stability for 12 months;
- Manufactured with the highest quality materials and subject to stringent quality controls;
- Other references available upon request.



## > SILAGE BAGS

A preferred storage system for silage is bagging and we offer quality products to help you be cost effective

### Technical Information:

- Available in 6,5 mil up to 9 mil thickness, **upon request.**



## > GRAIN BAGS

Storage of grains using the bagging method is cost effective and we have the quality products you need

### Technical Information:

- Available in 8 mil up to 9,5 mil thickness, **upon request.**

# OTHER CROP PROTECTION PRODUCTS



## ➤ ELASTIC TUBES

We offer bale tubes that are tear resistant and made for easy handling of your hay bales that will be well preserved.

### Technical Information:

- Available in Black / White and White / White, in 4 mil thickness, **upon request.**



## ➤ END CAPS & BAGS

Our Products offer protection for the start and end hay bales during inline wrapping maximizing your efficiency.

### Technical Information:

#### SIZE CAPS ROLL

- 88"x72"x 4mil WHITE SILAGE CAP
- 88"x120"x 4mil WHITE SILAGE CAP
- 93"x72"x 4mil WHITE SILAGE CAP
- 93"x120"x 4mil WHITE SILAGE CAP
- 110"x72"x 4mil WHITE SILAGE CAP

*Available upon request*



## ➤ REPAIR TAPE

Use our 3, 4 and 6 inch Repair Tape for situations where there is a tear or repair needed to help protect your forage.

### Technical Information:

- Available in 8 mil up to 9,5 mil thickness, **upon request.**

#### SIZE ROLLS CASE

- 72mm x 33m (3") white
- 144mm x 33m (6") white
- 72mm x 33m (3" Serrated Edge) white
- 96mm x 33m (4" Serrated Edge) white

*Available upon request*





**VELITEX**  
Textiles and plastics innovation for Agriculture

# SILAGE COVERING SYSTEM

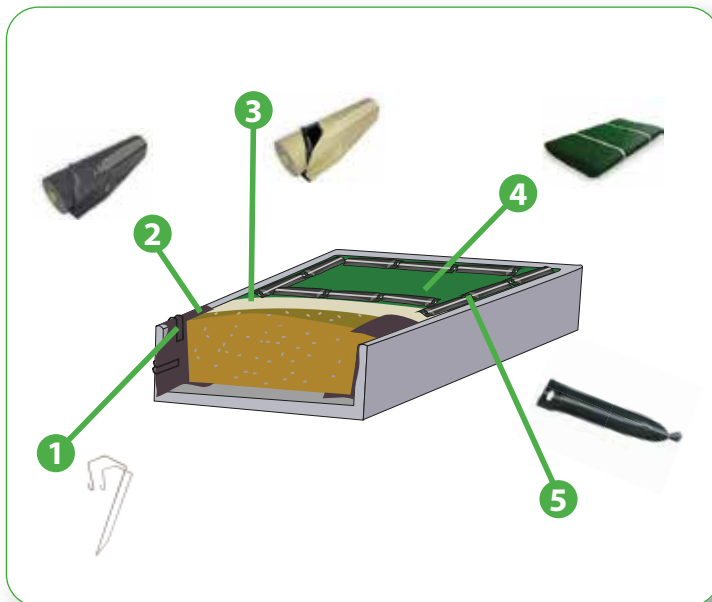
The purpose is to provide technical and innovative solutions for the conservation of silage & harvest - **100% made on measure** - adapted to the needs of end users in search of excellence.



## Advantages

- Better conservation
- With less plastic
- Less arduousness/hardship
- More environmentally friendly

## Keep the nutrients inside!



- 1 CLIPCOVER INOX :**  
Clamp to hold your wall film when making the silo. Universal, multi-use, stainless. Wall from 5 cm to 25 cm
- 2 SILOSIDE COVE 110µm:**  
Protects your walls, increases the airtightness of your silos. High elongation resistance.  
Availability: 3x100m - 4x 85m - 4x100m.
- 3 SEAL+80µm:**  
**Oxygen barrier** technology silage film.  
Hermetic <math>3\text{cm}^3/\text{m}^2/24\text{h}</math>.  
Availability: 6 to 24m wide x 50m - 100% tailor-made formula: width up to 42m (multiple of 2m); length: multiple 2m).
- 4 SILOSAT 200:**  
Reusable, flexible, resistant, non-slip and 100% opaque woven silo protection.
- 5 SILOBAGS:**  
Three handles, filling limit and integrated closing twine

# 2024/2025 EARLY BOOKING PROGRAM

---

## ➤ TERMS & CONDITIONS

To assist you in your ordering process we would be happy to provide you with a recap of your previous season. To take advantage of our Early Booking Program please complete this order form and email or fax directly to your Amjay sales representative.

### **Delivery**

Please advise if an early delivery date will be accepted and make sure to fill in your Ship Date Request with your order.

### **Freight**

Minimum order quantity for prepaid freight is 4 pallets of mixed product.

The pallets are always full and unbroken. Orders of less than 4 pallets will have a 350 USD charge. If you require delivery that includes flat bed truck, pallet jack, driver assist and/or lift gate, please make sure to inform us. These services are not included and will be billed accordingly. Please check with your Sales Representative.

### **Terms**

All orders placed on or before April 30th 2025, will receive extended payment terms of May 31st 2025. Orders placed on or after May, 1st 2025 will receive net 30 days. Sisal twine will receive 90 days on orders placed before May 31st 2025 and 30 days thereafter.

## ➤ DISCOUNTS

In order to take advantage of the discounts as per the above schedule, payment must be received by the corresponding due date. The discount that is applicable will always be the one corresponding to the date that payment was received by Amjay Ropes and Twines Limited.

### **Early Order Guarantee**

Amjay Ropes Twines will ensure timely arrival of all Early Order quantities, in our brands, booked no later than February 28th 2025.

### **Early Order and Early Take Discounts**

This discount is only available for Customers who place their orders before February 28th 2025 and take delivery before April 30th 2025.

### **Early Payment and Early Take Discounts**

Will apply only for Customers with purchase volumes above 10 000 USD for the 2024/2025 season.

## DISCLAIMER

**Amjay Ropes and Twines reserves the right to change or withdraw this program at any time without notice.**

**All orders for products are subject to availability.**

## Early Payment Discount / Early Take & Early Order Discount

% EARLY PAYMENT Discount PP Twine & Netwrap	
Paid by	% Discount
October 31 <sup>st</sup>	8,00%
November 30 <sup>th</sup>	8,00%
December 31 <sup>st</sup>	5,00%
January 31 <sup>st</sup>	4,00%
February 28 <sup>th</sup>	2,00%
March 31 <sup>st</sup>	0,00%
April 30 <sup>th</sup>	
May 31 <sup>st</sup>	
June 30 <sup>th</sup>	

% EARLY ORDER & EARLY TAKE Discount PP Twine & Netwrap				
Ordered by	Delivered by Jan 31 <sup>st</sup>	Delivered by Feb 28 <sup>th</sup>	Delivered by March 31 <sup>st</sup>	Delivered by April 30 <sup>th</sup>
October 31 <sup>st</sup>	6,50%	6,00%	5,00%	5,00%
November 30 <sup>th</sup>	x	6,00%	5,00%	5,00%
December 31 <sup>st</sup>	x	x	4,50%	4,00%
January 31 <sup>st</sup>	x	x	x	3,00%
February 28 <sup>th</sup>	x	x	x	2,00%
March 31 <sup>st</sup>	0,00%			
April 30 <sup>th</sup>				
May 31 <sup>st</sup>				
June 30 <sup>th</sup>				

x not applicable

% EARLY PAYMENT Discount SILAGE FILM	
Paid by	% Discount
October 31 <sup>st</sup>	1,50%
November 30 <sup>th</sup>	1,50%
December 31 <sup>st</sup>	1,25%
January 31 <sup>st</sup>	1,00%
February 28 <sup>th</sup>	0,75%
March 31 <sup>st</sup>	0,00%
April 30 <sup>th</sup>	
May 31 <sup>st</sup>	
June 30 <sup>th</sup>	

% EARLY ORDER & EARLY TAKE Discount		
	SILAGE FILM	SISAL TWINE
Paid by	% Discount	% Discount
October 31 <sup>st</sup>	2,50%	1,50%
November 30 <sup>th</sup>	2,50%	1,50%
December 31 <sup>st</sup>	2,00%	1,25%
January 31 <sup>st</sup>	1,50%	1,00%
February 28 <sup>th</sup>	1,00%	0,75%
March 31 <sup>st</sup>	0,00%	0,00%
April 30 <sup>th</sup>		
May 31 <sup>st</sup>		
June 30 <sup>th</sup>		



# REFERENCE TABLE / ORDER FORM

Phone: 1-800-668-5104

Fax: 1-866-460-0448

More contacts on the cover

<b>Company Name:</b>	<b>Date:</b>
<b>Bill to:</b>	<b>Customer Number:</b>
<b>Ship to:</b>	<b>Contact:</b>
<b>City/Province/Postal Code:</b>	<b>Email:</b>
<b>Phone:</b>	<b>Delivery Date:</b>
<b>Fax:</b>	<b>Accept Early Delivery (please mark): Yes / No</b>

Only orders placed before the 28<sup>th</sup> February and delivered before the 30<sup>th</sup> April will receive **Early Take discounts**

Prepaid Minimum Quantity: 4 pallets

## HEAVY HIGH DENSITY TWINES FOR LARGE SQUARE BALES:

Length	Knot Strength	Spools	Spools/Pallet	Quantity	Color	Price
Goldsoft 4000	550	1	36		BEIGE	
* Goldsoft 5000	550	1	36		BEIGE	
* Nytro 4000	550	1	36		LIGHT GREEN	
GH 3600 Unitech	650	1	48		BLUE	
* GH 3700 Unitech	800	1	36		ORANGE	

## HEAVY TWINES FOR LARGE SQUARE BALES:

Length	Knot Strength	Spools	Spools/Pallet	Quantity	Color	Price
GH 4000	350	1	48		ORANGE	
GH 4000 Unitech	440	1	48		ORANGE / BLUE	
UNI 5300 Unitech	440	1	36		CHERRY	
GH 4000	500	1	48		BLUE	

## MEDIUM TWINE FOR SMALL SQUARE BALES:

Length	Knot Strength	Spools	Spools/Pallet	Quantity	Color	Price
* GH 10000	125	2	50		BLUE	
* GH 9000	Pine Straw	1	80		ORANGE	
GH 9000	130	2	75		ORANGE / BLUE	
GH 9000	150	2	50		BLUE	
GH 9600	170	2	40		BLUE	
GH 7200	170	2	50		BLUE	
Maximum 9000	180	2	40		BLUE	
GH 12000 Standard 30 lb	185	2	40		BLUE	
GH 12000 Unitech 24,5 lb	185	2	36		BLUE	
GH 7200 XL	190	1	48		BLUE	
* GH 6500	210	1	60		ORANGE / BLUE	
* GH 6500	240	1	48		BLUE / GREEN	
* GH 8500	245	1	36		ORANGE	

## FINE TWINE FOR BIG ROUND BALES:

Length	Knot Strength	Spools	Spools/Pallet	Quantity	Color	Price
* ENVIRO FRIEND	110	1	80		GREEN	
GH 20000 XL	110	1	80		ORANGE / BLUE	
GH 20000 XL	110	2	75		ORANGE / BLUE	
GH 28000	110	2	50		ORANGE / BLUE	
GH 40000 XL	110	2	40		BLUE	

\* Subject to stock availability

(Customer Signature)

## REFERENCE TABLE / ORDER FORM

Phone: 1-800-668-5104

Fax: 1-866-460-0448

More contacts on the cover

<b>Company Name:</b>	<b>Date:</b>
<b>Bill to:</b>	<b>Customer Number:</b>
<b>Ship to:</b>	<b>Contact:</b>
<b>City/Province/Postal Code:</b>	<b>Email:</b>
<b>Phone:</b>	<b>Delivery Date:</b>
<b>Fax:</b>	<b>Accept Early Delivery (please mark): Yes / No</b>

Only orders placed before the 28<sup>th</sup> February and delivered before the 30<sup>th</sup> April will receive **Early Take discounts**

Prepaid Minimum Quantity: 4 pallets

### SISAL TWINE:

Length	Spools	Spools/Pallet	Quantity	Color	Price
GH 7200	2	60		Gold / Green	
GH 9000	2	60		Gold / Green	
GH 16000	2	60		Gold / Green	
* Binder 28800	6	40		Green	

### NET WRAP:

Type / Width	Length	Rolls/Pallet	Quantity	Color	Price
Cross Net 48"	9840'	16		Green & Green	
Cross Net 51"	9840'	16		Green & Green	
Cross Net 64"	7000'	16		Green & Green	
Cross Net 67"	7000'	16		Green & Green	
GH Premium 48"	9840'	16		Green	
GH Premium 51"	9840'	16		Green	
GH Premium 64"	7000'	16		Green	
GH Premium 67"	7000'	16		Green	
* GH Pine Straw 26"	8000'	16		White	
Nytro 48"	12500'	16		Green & White	
Nytro 51"	12500'	16		Green & White	
Nytro 64"	9000'	16		Green & White	
Nytro 67"	9000'	16		Green & White	

### SILAGE FILM:

Width	Length	Thickness / Layers	Quantity	Color	Price
20"	1800m	1 mil / Mono	24	White	
20"	1800m	1 mil / 5 Layers	24	White	
30"	1500m	1 mil / Mono	24	White	
* 30"	1500m	1 mil / Mono	24	Green	
30"	1500m	1 mil / 5 Layers	24	White	
30"	1250m	1,2 mil / Mono	24	White	
30"	1500m	1 mil / 7 Layers	40	White	

\* Subject to stock availability

(Customer Signature)

## REFERENCE TABLE / ORDER FORM

Phone: 1-800-668-5104

Fax: 1-866-460-0448

More contacts on the cover

<b>Company Name:</b>	<b>Date:</b>
<b>Bill to:</b>	<b>Customer Number:</b>
<b>Ship to:</b>	<b>Contact:</b>
<b>City/Province/Postal Code:</b>	<b>Email:</b>
<b>Phone:</b>	<b>Delivery Date:</b>
<b>Fax:</b>	<b>Accept Early Delivery (please mark): Yes / No</b>

Only orders placed before the 28<sup>th</sup> February and delivered before the 30<sup>th</sup> April will receive **Early Take discounts**

Prepaid Minimum Quantity: 4 pallets

### \*\* END BAGS / END CAPS / REPAIR TAPE

Item	Application	Units per Box	Box Quantity	Quantity	Price
88" x 72'	4ml End Caps	20			
93" x 72'	4ml End Caps	20			
110" x 72'	4ml End Caps	20			
88" x 120'	4' x 4' End Bags	20			
93" x 120'	4' x 4,5' End Bags	20			
3" x 100'	Repair Tape White	16			
6" x 100'	Repair Tape White	12			
4" x 180'	Repair Tape Serrated	12			

\*\* Minimum purchase quantity & Subject to stock availability.

### \* SHEETING / BUNKER COVERS BLACK / WHITE:

Size	Thickness Mil	Quantity	Price	Size	Thickness Mil	Quantity	Price
24' x 100'	5			24' x 100'	6		
24' x 150'	5			24' x 150'	6		
24' x 200'	5			24' x 165'	6		
32' x 100'	5			24' x 200'	6		
32' x 150'	5			32' x 100'	6		
40' x 100'	5			32' x 150'	6		
40' x 150'	5			32' x 200'	6		
40' x 200'	5			40' x 100'	6		
50' x 100'	5			40' x 150'	6		
50' x 150'	5			40' x 200'	6		
50' x 200'	5			40' x 1000'	6		
50' x 1000'	5			50' x 100'	6		
60' x 100'	5			50' x 150'	6		
60' x 150'	5			50' x 200'	6		
60' x 200'	5			50' x 1000'	6		
65' x 200'	5			60' x 100'	6		
24' x 100'	8			60' x 150'	6		
32' x 100'	8			60' x 200'	6		
* Subject to stock availability				60' x 1000'	6		

(Customer Signature)

# XXL SPOOLS

BRAND	MODEL
Case IH	LB 334 HD
Case IH	LB 436 HD
Claas	Quadrant 3300
Claas	Quadrant 3400
Krone	Big Pack 870 HDP
Krone	Big Pack 1290 HDP VC
Krone	Big Pack 890
Kuhn	LSB 870
Massey Ferguson	MF 2233
Massey Ferguson	MF 2234
Massey Ferguson	MF 2270 XD
Massey Ferguson	MF 2290
Massey Ferguson	MF 2370 UHD
New Holand	BB 1290 HD
New Holand	BB 340 HD

# CONTACT US

---

## **Ricardo Bastos Salgado**

rsalgado@amjayropesandtwines.com

**Tel:** 905 830 6755

**Cell:** 905 960 7700

**Canada / US Toll Free:** 1 800 668 5104

**Canada / US Toll Free FAX:** 1 866 460 0448

25 Millard Ave. W. Unit 1B, Newmarket, ON L3Y 7R6

[www.amjayropesandtwines.com](http://www.amjayropesandtwines.com)